

INTESTINAL ANTIGENIC PERMEABILITY SCREEN™



2 mL serum

- ▶ Actomyosin IgA
- ▶ Occludin/Zonulin IgG
- ▶ Occludin/Zonulin IgA
- ▶ Occludin/Zonulin IgM
- ▶ Lipopolysaccharides (LPS) IgG
- ▶ Lipopolysaccharides (LPS) IgA
- ▶ Lipopolysaccharides (LPS) IgM

CLINICAL USE:

- Measure intestinal permeability to large molecule which inflame the immune system
- Identify the damaging route through the intestinal barrier

RECOMMENDED FOR PATIENTS WHO:

- Present multiple symptom complaints (including Chronic Fatigue Syndrome)
- Suffer from abnormal immune cell count and function (including autoimmune diseases)
- Complain of food allergy and intolerance



TRANSCELLULAR & PARACELLULAR ROUTES OF INTESTINAL BARRIER PENETRATION

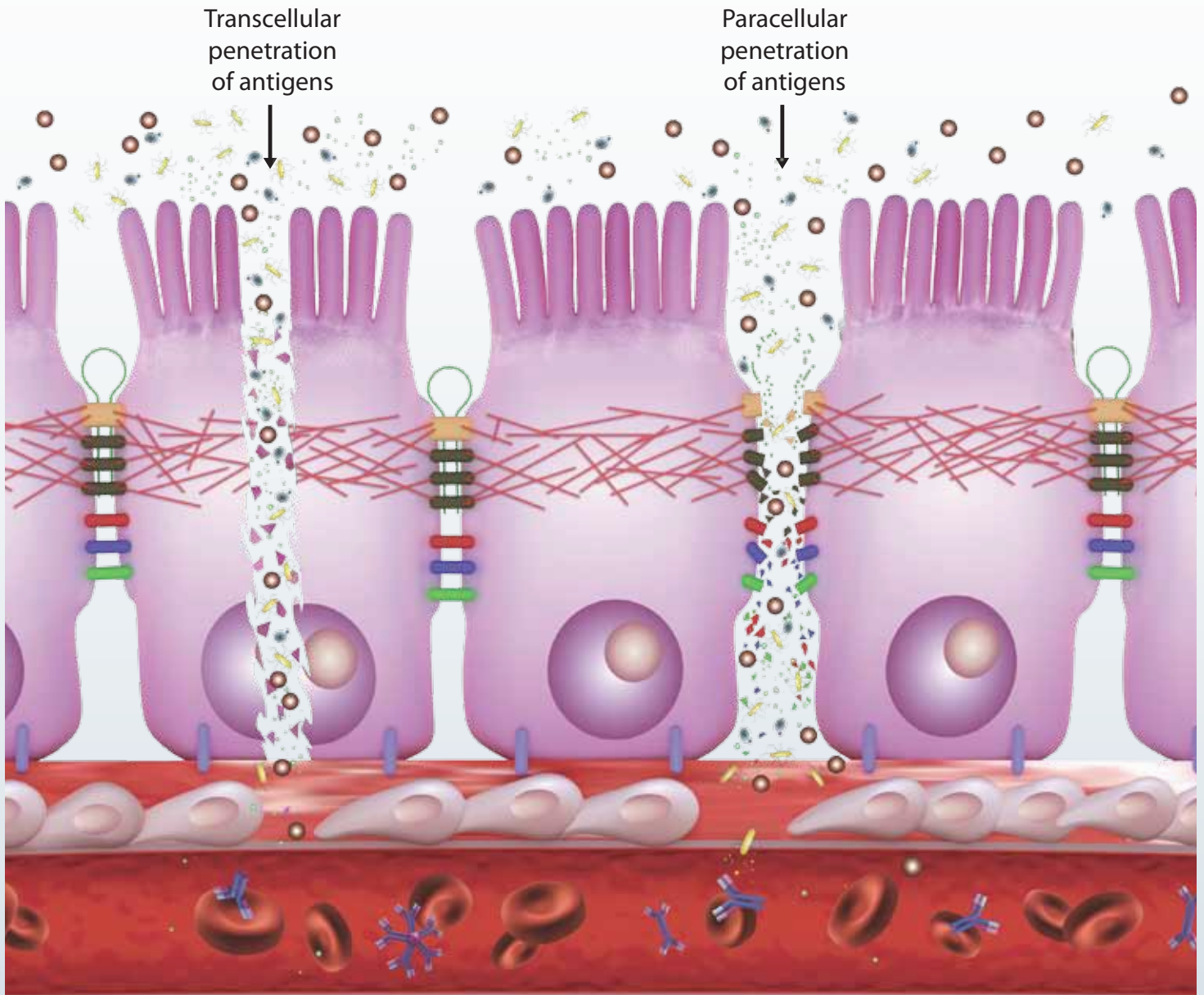








Illustration dramatized for visual purposes. Image property of Cyrex Labs. © 2010 Cyrex Laboratories, LLC. All rights reserved. A20151612

Antigens Measured	Triggers of Barrier Breakdown
 <p data-bbox="446 1747 722 1780">Actomyosin Proteins</p>	 <p data-bbox="998 1747 1112 1780">Parasites</p>
 <p data-bbox="446 1831 795 1864">Occludin/Zonulin Proteins</p>	 <p data-bbox="998 1831 1096 1864">Viruses</p>
 <p data-bbox="446 1915 722 1948">Lipopolysaccharides</p>	 <p data-bbox="998 1915 1071 1948">Yeast</p>